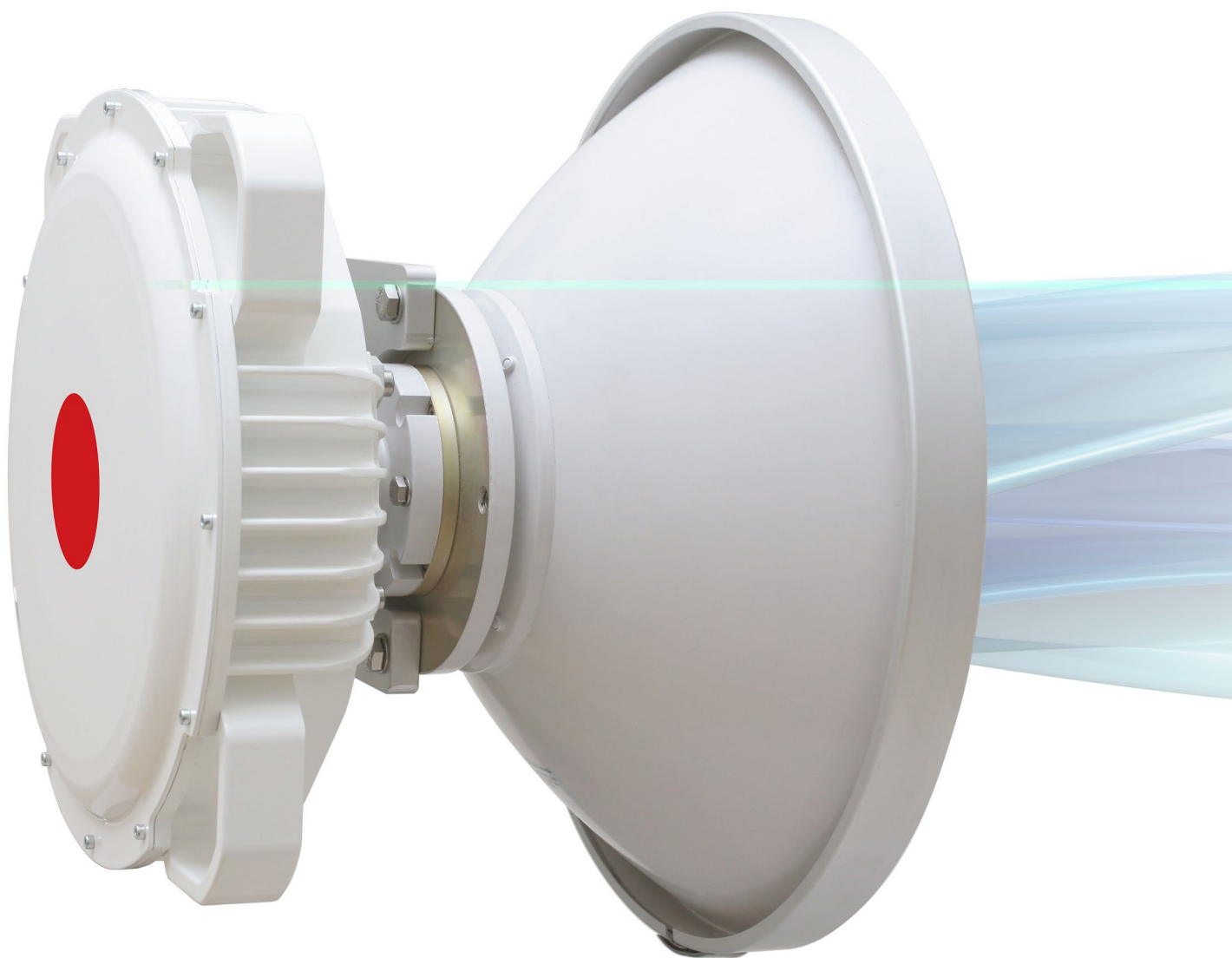




CFIP Lumina

Full-outdoor 366Mbps Gigabit Ethernet radio for IP networks

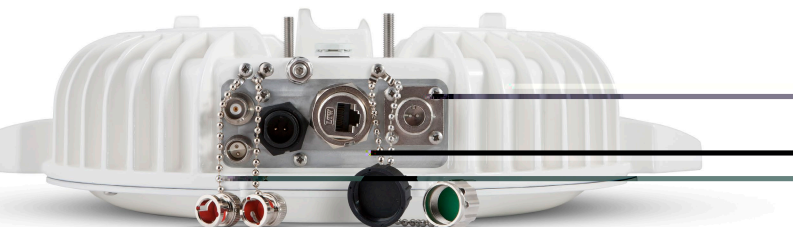


- Cost-effective all-outdoor solution for shelter free installations
- Industry-leading reliability and durability in harsh environment
- Built-in optical Ethernet interface for 100% lightning protection
- Built-in managed Gigabit Ethernet switch for flexible network configurations
- Patented ODU mounting clamps for quick and easy installation

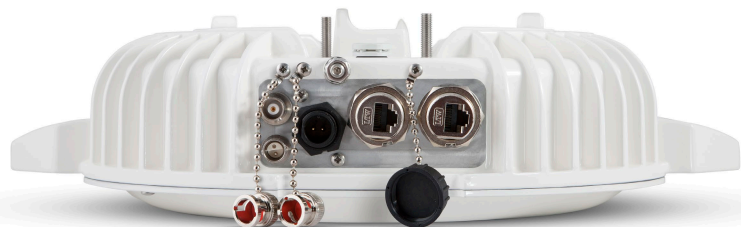


CFIP Lumina Optical

CFIP Lumina systems are intended for Gigabit Ethernet backbone applications delivering up to 366 Mbps per radio. 2+0 aggregation is available for higher bandwidth users. Both single or dual, electrical and fibre optical interface versions are available, as well as hybrid version with 1 optical and 1 electrical port.



CFIP Lumina Hybrid



CFIP Lumina Electrical

Total payload capacity (Mbps)

Modulation	ETSI				FCC				
	14 MHz	28 MHz	40 MHz	56 MHz	Channel bandwidths				
					20 MHz	30 MHz	40 MHz	50 MHz	56/60 MHz
4QAM	17	35	50	72	24	37	50	63	72
16QAM	34	69	98	145	49	74	98	125	145
32QAM	45	88	127	186	62	95	127	157	186
64QAM	57	115	164	241	82	123	164	207	241
128QAM	68	139	196	289	98	147	196	149	289
256QAM	79-86	162-175	229-245	337-366	115-125	172-184	229-245	290-313	337-366

CFIP Lumina	ETSI	FCC
Frequency Bands	6, 7, 8, 10, 11, 13, 15, 17 UL, 18, 23, 24 UL, 26, 38 GHz	6, 11, 15, 18, 23, 24 UL, 30 LMDS, 38 GHz
Channel Bandwidths	14/28/40/56 MHz	20/30/40/50/56/60 MHz
Modulation	4QAM / 16QAM / 32QAM / 64QAM / 128QAM / 256QAM, Hitless ACM	
Capacity	17-366 Mbps	24-366 Mbps
Ethernet	Optical 1 or 2 ODC ports / Electrical 1 or 2 RJ-45 / Hybrid 1 ODC and 1 RJ-45	
Service ports	BNC (RSSI), Twin-BNC (RS-232)	
Connection to antenna	N-type, UBR84, UBR100, UBR140, UBR220, UBR260, UBR320, Circular	
Management	SNMP traps, MIB, SNMP v1/v2c, Web GUI, Telnet, FTP/TFTP, Serial terminal	
Performance graphs	Rx level, Tx level, Radial MSE, LDPC decoder stress, Modem temperature, System temperature, PSU input voltage, PSU power consumption, constellation diagram, equalizer graph	
Ethernet switch	Managed Gigabit Ethernet Layer 2	
QoS, CoS	802.1p 4 queues with adjustable priorities, strict queues and Weighted Round Robin (WRR)	
VLAN support	802.1Q (up to 4K VLAN entries)	
Spanning Tree	802.1D-2004 RSTP, 802.1Q-2005 MSTP	
Operational use	EN 300 019 Class 4.1, IP66, outdoor weather protected, 100% condensing	
Power consumption	SP: 25-40 W; HP: 29-52 W	

